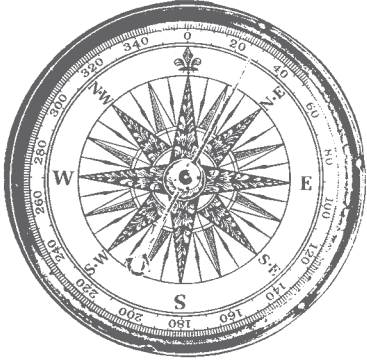




# Stampers Anonymous

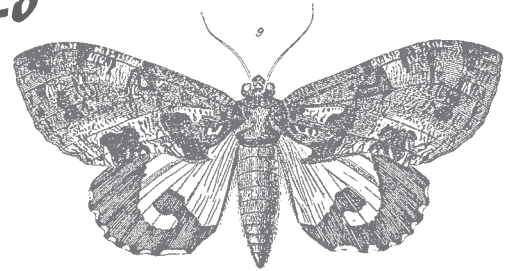
8. MOTHS



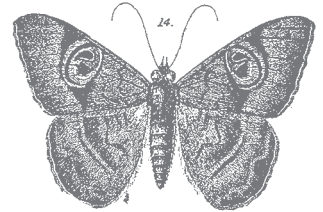
## Supplement 8.8



*Callimorpha lecontei*

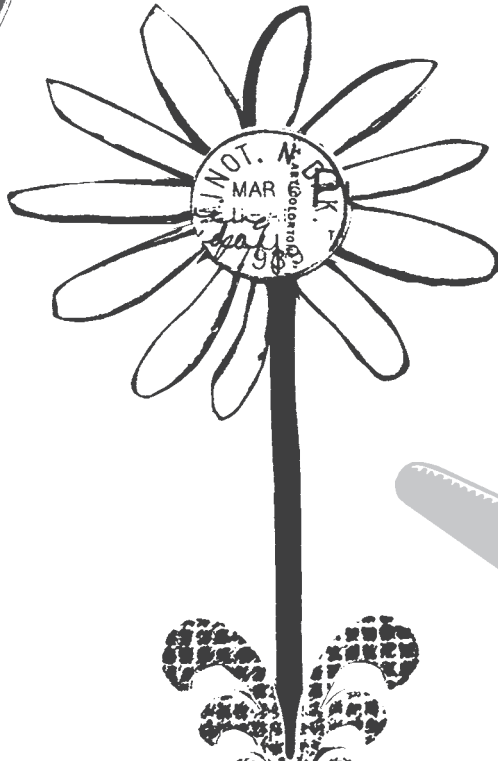


*Noctua (Ophideres) imperator*



*Erebus timacina*

VOL. IV. PLATE XXXI.

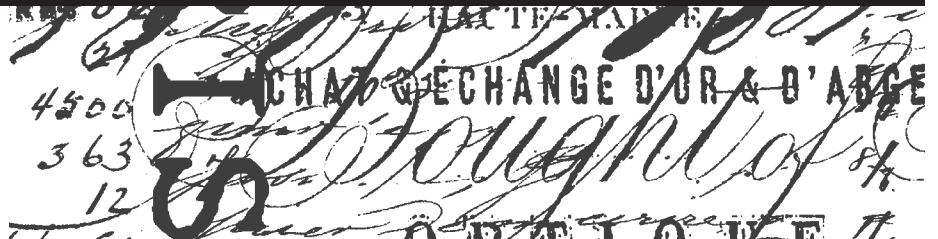


all new images including  
new designs from

Jim Holtz®  
COLLECTION

STUDIO 490

Wendy Beck





**M. A. SIMON,  
Confectioner**

Superior Ice Creams,  
Fancy Ices, \* \* \* \* \*  
And All Kinds of FANCY CAKE  
ON HAND OR MADE TO ORDER.

Special attention given to Fancy Creams. Orders promptly attended to. 140 Essex Street, - Salem, Mass.

E2-1639  
CONFECTION AD



**BOSTON FISH MARKET,**  
—Dealer in All Kinds of—  
FRESH, SALT AND PICKLED **FISH,**  
Oysters, Lobsters and Shell Fish of Every Description.  
J. P. McCARTHY, Prop'r.  
9 NORTH ST., SALEM.

E2-1642  
FISH AD



**FURNITURE DEALERS.  
WHITE & CO.,**  
84 WASHINGTON STREET.  
Also Agents for the  
CELEBRATED HOUSEHOLD STOVES.

Summer Cottages Furnished Throughout.  
Furniture Repaired, Varied, Upholstered, Polished in the best manner, lower than any prices for same quality of work.  
CUSTOM AND CARPET WORK A SPECIALTY AND WARRANTED.

E2-1645  
FURNITURE AD

**JAMES F. DONOVAN,** Successor to J. N. GLOVER.  
House, Sign and Decorative  
**PAINTER**  
Paper Hanging a Specialty.  
Prompt and Personal Attention Given to all Orders.  
Residence, 42 Broad Street.  
SHOP, 6 NORMAN ST., SALEM.

E2-1648  
PAINTER AD

Pierre L. M. Gaudette,  
**DRUGGIST,  
PHARMACIST.**

Toilet and Fancy Articles and Perfumery.  
Physicians' Prescriptions a Specialty.

NO. 122 LAFAYETTE STREET.  
SALEM, MASS.



E2-1640  
DRUGGIST AD

**ERVIN MAYDEN,  
FLORIST.**

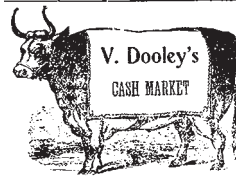


BOUQUETS, CUT FLOWERS AND FUNERAL DESIGNS.

Plants and Shrubbery furnished at Lowest Prices.

ATLANTIC AVE., cor. BEACH ST., MARBLEHEAD.

E2-1643  
FLORIST AD



Is the only Cash Market downtown  
A FULL LINE OF  
Groceries and Provisions,  
MEATS, POULTRY AND GAME  
constantly on hand.

**V. DOOLEY,**  
Cor. of Derby and Hardy Sts.,  
SALEM, MASS.

E2-1646  
MEAT AD

JOSEPH J. BLACKBURN. WILLIAM O. PATTERSON.



**BLACKBURN & PATTERSON,  
LIVERY STABLE,**  
Safe and Reliable Horses and Easy Carriages of the best style, furnished at short notice, for  
Weddings, Funerals, Business or  
Pleasure Riding.  
Cor. Summer and Foster Sts. PEABODY, MASS.

E2-1649  
STABLE AD

**PHILBRIC ELECTRIC CO.**

DEALERS IN

ELECTRIC SUPPLIES  
of All Kinds.



Burglar Alarms.  
Annunciators.  
Electric Bells.  
Telephones.  
Electric Light Fixtures.  
Wiring for all Purposes.

8 Central St., SALEM.

E2-1641  
ELECTRIC AD

**PETTINGELL & BARRY,  
DANVERS AND BOSTON  
EXPRESS & FREIGHT LINE**



OFFICES:  
27 Kingston Street, DANVERS. } BOSTON  
32 and 34 Court Square, 150 High Street, }  
24 1-2 MAPLE ST., DANVERS.  
FOUR TRIPS EACH WAY DAILY.  
Runs Direct to Danvers Asylum Daily.  
LEAVE DANVERS, 8, 10 AND 11:30 A. M. AND 5:30 P. M.  
LEAVE BOSTON, 11:30 A. M., 2 AND 4 P. M.  
Goods forwarded to all points. General Teasing and Piano Moving. All kinds of COAL for sale in any quantity. Coal Yard, Hobart Street.

E2-1644  
FREIGHT AD



**MILLINERY.**

149 ESSEX STREET.

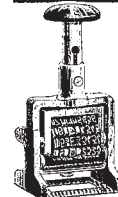
Would you to call and examine her large line of Infants' Wear, Corsets, White, Wrappers, etc. She also makes to order Spinal Corsets, Blouses, Tricots, Comfort Corsets and Waists, besides doing all kinds of Sewing, Machine stitching and Hand Work.

If you want to buy a nice Hat or Bonnet, or desire a FASHIONABLE DRESSMAKER,  
Call on MADAME D. DUPONT,

DO NOT FORGET THE NUMBER.

149 Essex St., - - - Salem.

E2-1647  
MILLINERY AD



**H. C. DIMOND & CO.,**  
Manufacturers of

**Rubber and Metal Stamps**

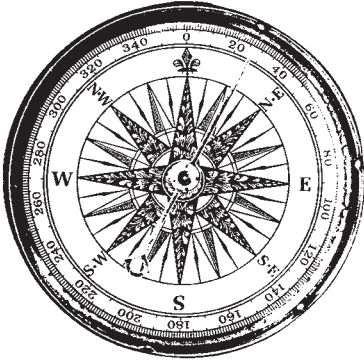
OF ALL KINDS.

Shoe Lining and Consecutive Numbering Machines.

Ribbon Stamps, Seal Presses and Check Protectors.

22 MILK STREET, - - BOSTON.  
REPAIRING A SPECIALTY.

E2-1650  
STAMPS AD



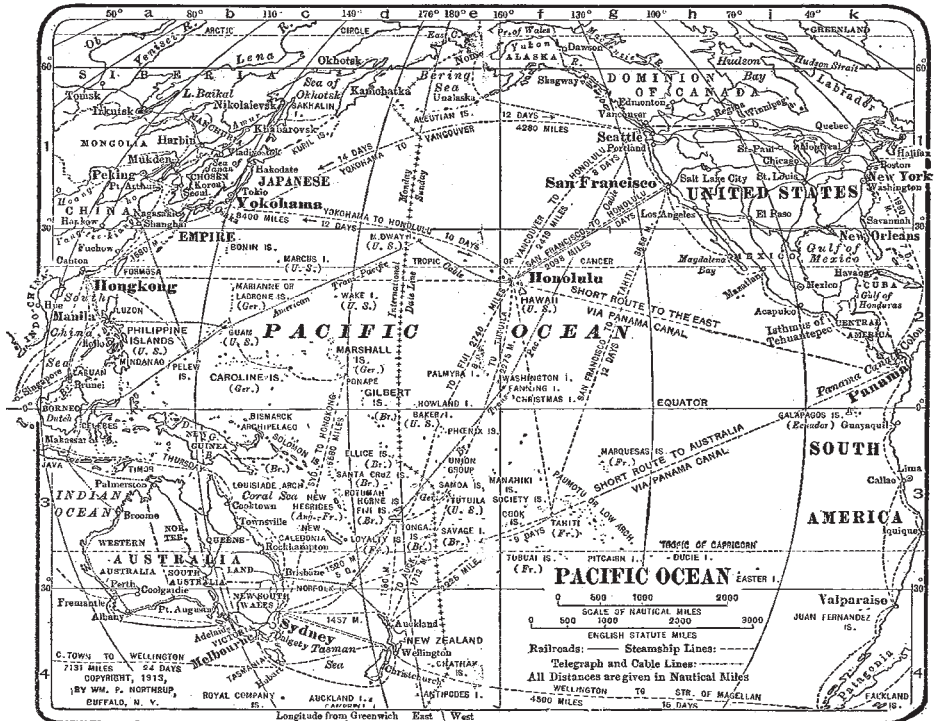
H1-1651  
COMPASS

ISSUED BY <b>AIRLINES, INC.</b>		PASSENGER TICKET AND BAGGAGE CHECK PASSENGER COUPON		013 F 190180	
Subject to Conditions of Contract the reverse side of Passenger Coupon					
FOR ISSUING OFFICE ONLY	COMPLETE ROUTING THIS TICKET AND ORIGIN	Form	CONNECTION TICKETS	DATE AND PLACE OF ISSUE	
FROM/TO LAX	CARRIER AA	FARE Calculation 81.25	DESTINATION LAX	Form 013 F 190180	Serial Serial
ISSUED IN EXCHANGE FOR	DATE AND PLACE OF ORIGINAL ISSUE	JUN 22 59			
ENDORSEMENTS	BAGGAGE	VALID UNTIL	NOT GOOD FOR PASSAGE	FARE CLASS / BASIS	AMERICAN AIRLINES CALIF. INC. 606
FREE ALLOW.	Checked Pa.	Unck'd Wt.	FROM LOS ANGELES	TO CHICAGO	FLIGHT NUMBER 4
			TO CHICAGO	CHANGING	DATE JUN 22 59
			TO MIDWAY	F	TIME 11:20 AM
			TO MADISON	F	RES. STATUS NR
TAXES	TOTAL	NAME OF PASSENGER	NOT TRANSFERABLE		
EQUIVALENT FREIGHT FARE	188.80				
TAX	18.88				
TOTAL	207.68				
FORM OF PAYMENT	TT-0457				

P2-1653  
AIRLINE TICKET

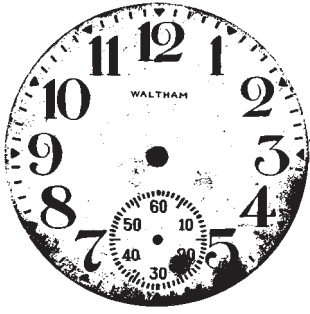


M1-1652  
AIRLINER

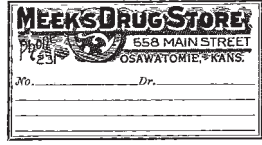


V1-1654  
WORLD MAP





G1-1660  
CLOCK



D4-1657  
PHARMACY



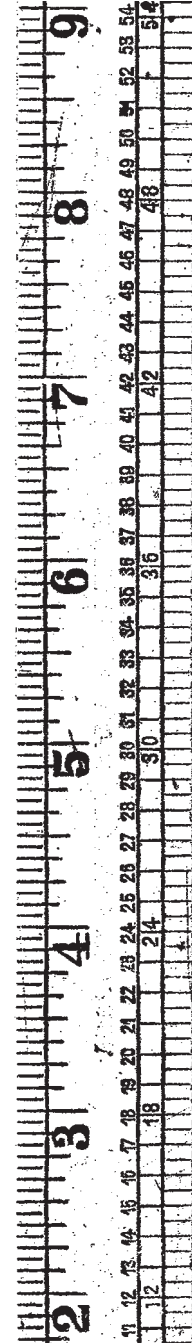
D6-1658  
DRUG LABEL



D6-1659  
POISON



X3-1656  
LARGE COVER



U4-1664  
RULER



E2-1665  
BETWEEN



G1-1666  
THREAD 1



G1-1667  
THREAD 2



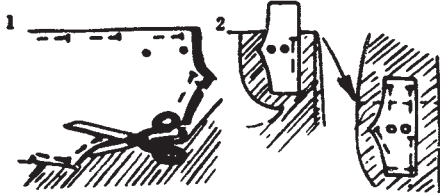
P3-1670  
DRESS FORM

LENGTHEN OR SHORTEN HERE

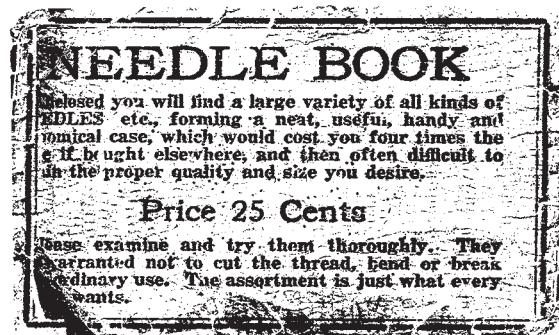


**PATTERN ADJUSTMENT:**

Pin pattern pieces together, taking up full seam allowance. Fit for any alterations. If necessary, lengthen or shorten pattern as illustrated.



P2-1669  
PATTERN

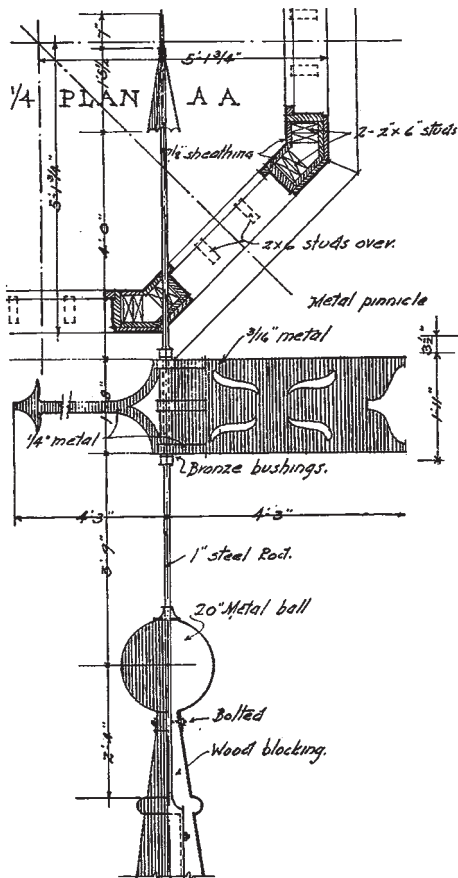


K5-1668  
NEEDLE BOOK





M1-1677  
TOPHATS



P2-1678  
BLUEPRINTS

PIÈCES DE RECHANGE POUR BICYCLETTES "HIRONDELLE"

Le tarif ci-dessous ne donne que les pièces facilement démontables; pour toutes celles faisant corps avec le cadre ou l'un des organes de la machine, telles que les couvertures des moyeux, par exemple, qui sont emboîtées à la presse et recitrées ensuite à la main, il est préférable, à tous les points de vue, de nous retourner l'organe à réparer.

Toutes nos pièces de rechange sont rigoureusement interchangeables et il suffit de nous indiquer LE NUMÉRO DE FABRICATION (ce n° se trouve sur le raccord de selle) pour que nous puissions fournir toutes les pièces nécessaires. Toutefois, lorsqu'il s'agit de machines dont la fabrication remonte à 2 ou 3 ans, il est préférable, pour éviter toute erreur, de nous adresser comme échantillon les pièces à remplacer.

PÉDALIER		ROUE LIBRE ET CHANGEMENT DE VITESSE	
1. Axe pour machine	2. 3. 4. 5. 6. 7. 8. 9. 10. 11. 12. 13. 14. 15.	36. Pignon à roue ordinaire de 16 à 22 dents	12
10. Manivelle à plateau pour machine		40. Pignon à roue de 16 dents p <sup>r</sup> M. Rétro démontable	10
11. Manivelle simple pour machine		41. Le même p <sup>r</sup> M. Rétro démontable	10
12. Roue dentée pour machine		42. Couronne dentée de 14 dents pour moyen Rétro	7
13. Rivet d'attache de roue dentée, Demis-Hirondelle Course		43. Pignon inverseur de la chaîne M. Rétro directe	2.50
14. Boulon d'attache de roue dentée avec écrou machine Luxe		44. Frette intérieure du pignon 36	3
15. Clavette de manivelle avec écrou machine Luxe		45. La même p <sup>r</sup> pignons n <sup>os</sup> 40 et 41 M. Rétro etc.	4.50
		46. Le même p <sup>r</sup> pignons n <sup>os</sup> 40 bis et 41 M. Rétro etc.	4.50
		47. Frette intérieure de la couronne dentée n <sup>o</sup> 41 p <sup>r</sup> moyen Rétro démont.	4
		48. Ecrou de réglage des billes du pignon n <sup>o</sup> 36	2.50
		49. Billes de réglage des billes du pignon n <sup>o</sup> 36	2.50
		50. Ecrou de réglage des billes du pignon n <sup>o</sup> 40 bis moyen démontable	2
		51. Ecrou de réglage des billes de la frette n <sup>o</sup> 45	2.25
		52. Manivelle à plateau pour machine	3
		53. Taquet d'arrêt avec vis des écrous de réglage n <sup>os</sup> 46 bis et 46 ter	0.10
		54. Taquet d'arrêt avec vis des écrous de réglage n <sup>os</sup> 47 et 47 bis	6
		55. Disque de recouvrement du pignon n <sup>o</sup> 36	14
		56. Le même p <sup>r</sup> pignon n <sup>o</sup> 40 et frette n <sup>o</sup> 45	
		57. Le même p <sup>r</sup> pignon n <sup>o</sup> 40 bis et frette n <sup>o</sup> 45 bis	
		58. Vis d'attache des disques n <sup>os</sup> 49, 49 bis et 49 ter	0.75
		59. Jeu de 38 billes de 4 m/m pour pignons n <sup>os</sup> 36, 40, 40 bis, frette n <sup>os</sup> 45 et 45 bis	0.90
		60. Cliquet de machine Rétro	0.90
		61. Ressort de l'arrêt n <sup>o</sup> 48	0.25
		62. Cône mobile pignon 42	0.10
		63. Cône fixe pignon 42	0.15
		64. Boulon de réglage du pignon inverseur n <sup>o</sup> 42	2.50
		65. Rondelle et son contre-écrou	8

**AVIS IMPORTANT!** — Le tarif ci-dessus ne s'applique qu'aux pièces de rechange pour cycle "HIRONDELLE" décrits dans le présent catalogue. Pour les pièces de rechange d'adaptés d'autres modèles de bicyclette, voir tarif des réparations, page 36.

Rue du Louvre, 42. — DÉPÔT À PARIS — 42, Rue du Louvre.

U3-1679  
GEARS



E2-1676  
FINGER



D4-1675  
ADMIT



H1-1680  
AMSTERDAM



H1-1681  
MONDIAL



J1-1682  
BARKER



J1-1683  
LE GRAND



J1-1684  
PALACE



J1-1685  
PARK



J1-1686  
ST. MORITZ



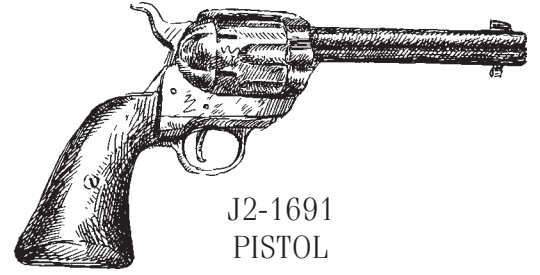
J2-1687  
EUROPA



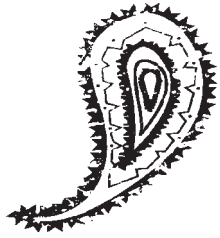
J2-1688  
PARIS HOTEL



G4-1690  
CIRCLESTARS



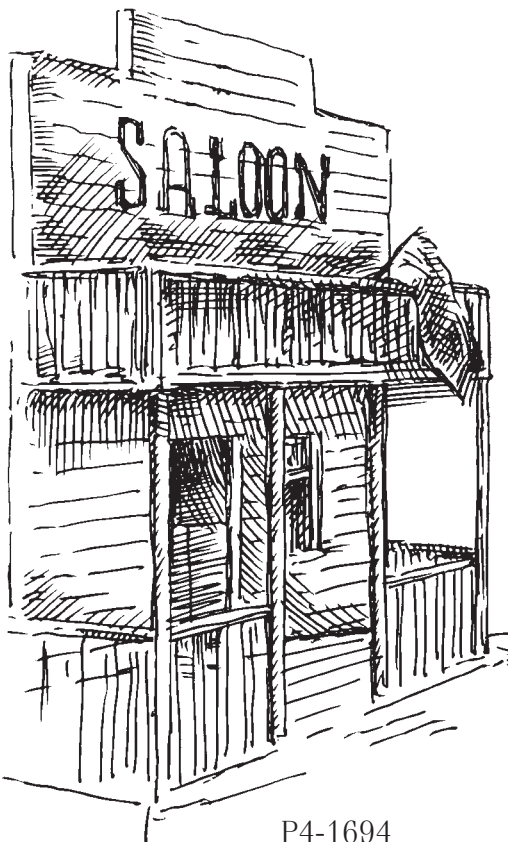
J2-1691  
PISTOL



D3-1689  
SMALL PAISLEY



K5-1692  
WILD WEST



P4-1694  
SALOON



P4-1693  
COWBOY

1 2 3 4 5 6 7 8 9

J4-1701  
NUMBERSTRIP

LOVE  
WISH  
DREAM

H1-1697  
LOVE WISH DREAM

when  
i want  
to see love  
defined i  
look at  
you.

E1-1695  
LOVE DEFINED

the  
heart  
has it's reasons  
of which  
reason knows  
nothing.

E1-1696  
THE HEART

the world  
of reality  
has its  
limits; but  
the world of  
imagination  
is boundless.

J2-1700  
REALITY

our heart  
captures  
photos of  
your life,  
notes that  
create a  
timeless  
story of  
everyday,  
a journal  
of memories  
we cherish  
hopes and  
dreams the  
thoughts  
or secret  
wishes we  
treasure,  
the moments  
you live to  
embrace  
love, XOXO  
imagine  
a journey  
of creative  
stuff ideas  
and things  
to discover.

experience  
is not what  
happens  
to you.  
it's what  
you do  
with what  
happens  
to you.

J2-1699  
EXPERIENCE

Life  
IS WHAT  
HAPPENS  
TO US  
WHILE WE  
ARE MAKING  
OTHER  
PLANS.

J1-1698  
OTHER PLANS

what if  
your **FEARS**  
and  
**DREAMS**  
exist in  
the same  
place,  
would  
you still  
go there?

K5-1703  
FEARS AND DREAMS

every  
possibility  
begins with  
to the courage  
imagine...

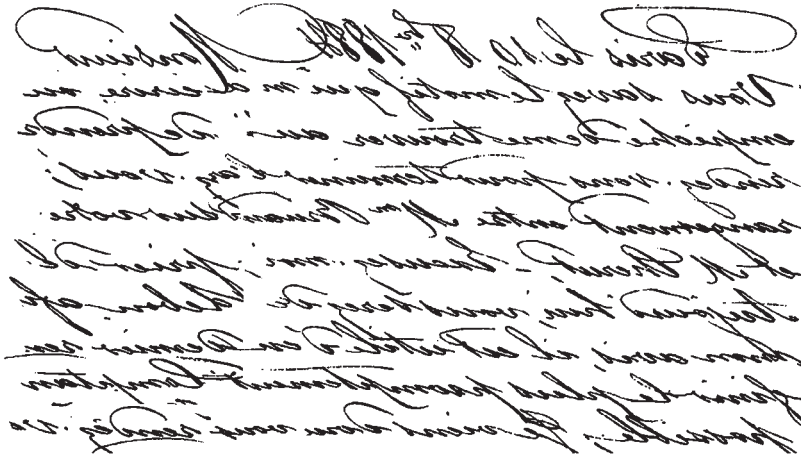
K1-1702  
POSSIBILITY

U4-1704  
TINY WORDS



1734 21. 0 1212 1909 19. 2 1314 1927 18. 9 1328 1511 20. 8 2204  
0210 23. 0 1250 0820 20. 0 0040 0711 19. 0 0129 0242 21. 4 0924  
1529 22. 1 1811 20. 0 1233 1825 19. 2 1310 0219 20. 2 2125  
0433 23. 0 1390 2321 21. 9 0002 0913 20. 8 0041 0219 20. 2 0911  
1618 22. 2 2314 1721 21. 0 1409 1081 20. 1 1228 1323 19. 2 2041  
0329 22. 7 1102 0450 22. 0 1124 0222 21. 7 1328 0132 19. 4 0821  
1244 21. 8 2239 1638 21. 2 2323 1710 20. 2 2328 1302 18. 4 1949  
0328 22. 0 1028 0409 22. 0 1117 0434 22. 2 1148 0044 18. 1 0720  
1512 21. 0 2204 1256 21. 4 2242 1024 20. 8 2313 1247 21. 0 1843  
0259 21. 0 0922 0328 22. 2 1037 0320 22. 3 1104 1128 17. 4 0604  
1439 20. 0 2128 1217 21. 1 2209 0399 20. 4 2227 2327 17. 0 0171  
0227 19. 7 0913 0242 21. 0 0029 0309 21. 0 1019 0201 17. 3 0422  
1407 18. 2 2049 1442 20. 2 2128 1459 20. 0 2142 2142 19. 0 1237  
0121 18. 2 0831 0221 20. 0 0919 0220 21. 2 0933 0821 18. 2 0248  
1324 17. 3 2001 1404 19. 3 2048 1417 19. 1 2027 2017 18. 0 0142

P5-1705  
REFLECTION NUMBERS



P5-1706  
REFLECTION SCRIPT

careful, scrupulous, or fastidious or interested; strange;  
strange, rare, or novel. 4 [Ops.], the quality of being  
concern one; inquisitiveness. 3. anything curious,  
2. a desire to learn about things that do not necessarily  
curious; see CURIOUS], 1. a desire to learn or know.  
[M.E. curiosité; OFr. curiosité, curiosité; L. curiositas >  
curiositas (-tis)], n. [pl. curiositates (-tis)],  
deeply creative faculty, 2. anything imagined; art  
[imagination is often regarded as the more seriously and  
by comparing previous experiences; creative power.  
truly experienced, or of creating new images or ideas  
creating mental images of what has never been ac-  
what is not actually present. (b) the act or power of  
1. (a) the act or power of forming mental images of  
crown; L. imaginatio > pp. of imaginari; see IMAGINE].  
im·ag·i·na·tion (i-maj-i-nā'shen), n. [M.E. imaginat-

P5-1707  
REFLECTION WORDS

STAMPERS ANONYMOUS

1-800-945-3980 WWW.STAMPERSANONYMOUS.COM



M. A. SIMON,  
**Confectioner**

Superior Ice Creams,  
Fancy Ices, *شوربات*  
And All Kinds of **FANCY CAKE**  
ON HAND OR MADE TO ORDER.

Special attention given to Fancy Creams. Orders promptly attended to. 140 Essex Street, - Salem, Mass.

ERVIN MAYDEN,  
**FLORIST.**



BOUQUETS, CUT FLOWERS AND  
FUNERAL DESIGNS.

Plants and Shrubbery furnished at  
Lowest Prices.

ATLANTIC AVE., cor. BEACH ST., MARBLEHEAD.

Pierre L. M. Gaudette,  
**DRUGGIST,**  
**PHARMACIST.**

Toilet and Fancy Articles and Perfumery.  
Physicians' Prescriptions a Specialty.

NO. 122 LAFAYETTE STREET.  
SALEM, MASS.



FURNITURE DEALERS.  
**WHITE & CO.,**

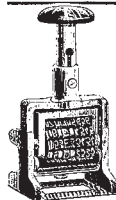
84 WASHINGTON STREET.

Also Agents for the  
CELEBRATED HOUSEHOLD STOVES.

Summer Cottages Furnished Throughout.

Furniture Repaired, Upholstered, Polished in the  
best manner, lower than city prices for same quality of work.

CUSTOM AND CARPET WORK A SPECIALTY AND WARRANTED.



H. C. DIMOND & CO.,  
Manufacturers of  
**Rubber and Metal Stamps**

OF ALL KINDS.

Shoe Lining and Consecutive Numbering Machines.

Ribbon Stamps, Seal Presses  
and Check Protectors.

22 MILK STREET, - BOSTON.  
REPAIRING A SPECIALTY.

JOSEPH J. BLACKBURN.

WILLIAM O. PATTERSON.

**BLACKBURN & PATTERSON,**

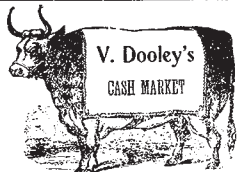


**LIVERY STABLE,**

Safe and Reliable Horses and Easy Carriages of  
the best style, furnished at short notice, for

Weddings, Funerals, Business or  
Pleasure Riding.

Cor. Summer and Foster Sts. PEABODY, MASS.



Is the only Cash Market downtown  
A FULL LINE OF

Groceries and Provisions,  
MEATS, POULTRY AND GAME  
constantly on hand.

V. DOOLEY,  
Cor. of Derby and Hardy Sts.,  
SALEM, MASS.



BOSTON FISH MARKET,

-Dealer in All Kinds of-

FRESH, SALT **FISH,**  
AND PICKLED

Oysters, Lobsters and Shell Fish of Every  
Description.

J. T. MCCARTHY, Prop'r.

9 NORTH ST., SALEM.

ADVERTS CMS101

PHILBRIC ELECTRIC CO.

DEALERS IN

ELECTRIC  
SUPPLIES  
of All Kinds.



Burglar Alarms.

Annunciators.

Electric Bells.

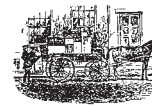
Telephones.

Electric Light Fixtures.

Wiring for all Purposes.

8 Central St., SALEM.

PETTINGELL & BARRY,  
DANVERS AND BOSTON  
**EXPRESS & FREIGHT LINE**



OFFICES:  
77 Kingston Street,  
32 and 34 Court Square,  
120 High Street, } BOSTON  
24 & 2 MAPLE ST., DANVERS.

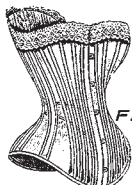
FOUR TRIPS EACH WAY DAILY.

Runs Direct to Danvers 5:15 AM Daily.

LEAVE DANVERS, 8:10 AND 11:30 A. M. AND 5:30 P. M.

LEAVE BOSTON, 11:30 A. M., 2 AND 4 P. M.

Goods forwarded to all points. General Teaming and Piano Moving. All kinds of COAL for sale in any quantity. Coal Yard, Hobart Street.



**MILLINERY.**

149 ESSEX STREET.

Wishes you to call and examine her large line of Infants' Wear, Corsets, White, Wrappers, etc. She also makes to order: Nightgowns, Blouses, Tricots, Comfort Corsets and White, besides doing all kinds of Sewing, Machine Sewing and Hair Work.

If you want to buy a nice Hat or Bonnet, or desire a  
**FASHIONABLE DRESSMAKER,**  
Call on MADAME D. DUPONT.

DO NOT FORGET THE NUMBER.

149 Essex St., - - - Salem.

JAMES F. DONOVAN, Successor to

J. N. GLOVER.

House, Sign and Decorative

**PAINTER**

Paper Hanging a Specialty.

Prompt and Personal Attention Given  
to all Orders.

Residence, 42 Broad Street.

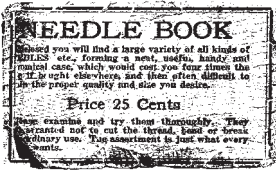
SHOP, 6 NORMAN ST., SALEM.





STAMPERS ANONYMOUS  
1-800-945-3980 WWW.STAMPERSANONYMOUS.COM

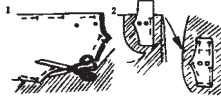
Jim Holtz COLLECTION



LENGTHEN OR SHORTEN HERE



PATTERN ADJUSTMENT:  
Pin pattern pieces together, taking up full seam allowance. Fit for any alterations. If necessary, lengthen or shorten pattern as illustrated.



HABERDASHERY CMS105

CMS105  
HABERDASHERY  
Set shown at 50% of Actual Size  
Retail sale price \$21.95

STAMPERS ANONYMOUS  
1-800-945-3980 WWW.STAMPERSANONYMOUS.COM

Jim Holtz COLLECTION

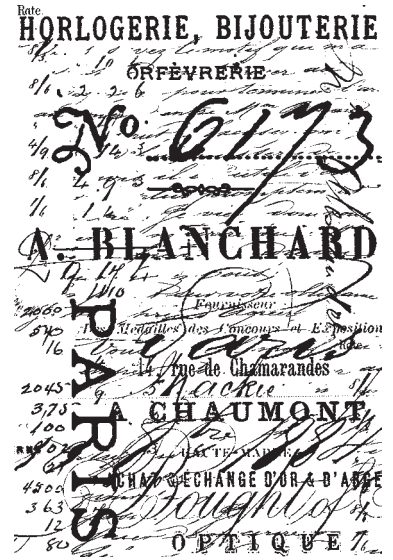
BUTTERFLIES & MOTHS



COL. IV. PLATE XXXI.

PARIS  
29, Rue Turbigo  
NEW-YORK  
73, Warren-Street.  
LONDON  
33, King William-Street, E.C.

PAPILLON CMS106



BUTTERFLIES & MOTHS



CMS106  
PAPILLON  
Set shown at 50% of Actual Size  
Retail sale price \$21.95

STAMPERS ANONYMOUS  
1-800-945-3980 WWW.STAMPERSANONYMOUS.COM

Jim Holtz COLLECTION

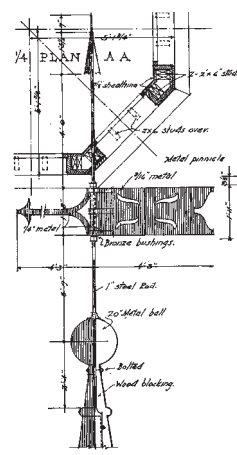
30 MANUFACTURE FRANÇAISE GARMBE ET CYCLES DE SAINT-ÉTIENNE (4217)

PIÈCES DE RECHANGE POUR BICYCLETTES "HIRONNELLE"

PÉDALEUR		2ème. ÉVÈQUE de vélo	
1. Axe pour pédale	0.75	1. Roue arrière	0.75
2. Axe pour pédale	0.75	2. Roue avant	0.75
3. Axe pour pédale	0.75	3. Roue	0.75
4. Axe pour pédale	0.75	4. Roue	0.75
5. Axe pour pédale	0.75	5. Roue	0.75
6. Axe pour pédale	0.75	6. Roue	0.75
7. Axe pour pédale	0.75	7. Roue	0.75
8. Axe pour pédale	0.75	8. Roue	0.75
9. Axe pour pédale	0.75	9. Roue	0.75
10. Axe pour pédale	0.75	10. Roue	0.75
11. Axe pour pédale	0.75	11. Roue	0.75
12. Axe pour pédale	0.75	12. Roue	0.75
13. Axe pour pédale	0.75	13. Roue	0.75
14. Axe pour pédale	0.75	14. Roue	0.75
15. Axe pour pédale	0.75	15. Roue	0.75
16. Axe pour pédale	0.75	16. Roue	0.75
17. Axe pour pédale	0.75	17. Roue	0.75
18. Axe pour pédale	0.75	18. Roue	0.75
19. Axe pour pédale	0.75	19. Roue	0.75
20. Axe pour pédale	0.75	20. Roue	0.75
21. Axe pour pédale	0.75	21. Roue	0.75
22. Axe pour pédale	0.75	22. Roue	0.75
23. Axe pour pédale	0.75	23. Roue	0.75
24. Axe pour pédale	0.75	24. Roue	0.75
25. Axe pour pédale	0.75	25. Roue	0.75
26. Axe pour pédale	0.75	26. Roue	0.75
27. Axe pour pédale	0.75	27. Roue	0.75
28. Axe pour pédale	0.75	28. Roue	0.75
29. Axe pour pédale	0.75	29. Roue	0.75
30. Axe pour pédale	0.75	30. Roue	0.75

NOUVEAU LIBRE ET CHANGEMENT DE VITESSE

NOUVEAU LIBRE		CHANGEMENT DE VITESSE	
1. Roue	0.75	1. Roue	0.75
2. Roue	0.75	2. Roue	0.75
3. Roue	0.75	3. Roue	0.75
4. Roue	0.75	4. Roue	0.75
5. Roue	0.75	5. Roue	0.75
6. Roue	0.75	6. Roue	0.75
7. Roue	0.75	7. Roue	0.75
8. Roue	0.75	8. Roue	0.75
9. Roue	0.75	9. Roue	0.75
10. Roue	0.75	10. Roue	0.75
11. Roue	0.75	11. Roue	0.75
12. Roue	0.75	12. Roue	0.75
13. Roue	0.75	13. Roue	0.75
14. Roue	0.75	14. Roue	0.75
15. Roue	0.75	15. Roue	0.75
16. Roue	0.75	16. Roue	0.75
17. Roue	0.75	17. Roue	0.75
18. Roue	0.75	18. Roue	0.75
19. Roue	0.75	19. Roue	0.75
20. Roue	0.75	20. Roue	0.75
21. Roue	0.75	21. Roue	0.75
22. Roue	0.75	22. Roue	0.75
23. Roue	0.75	23. Roue	0.75
24. Roue	0.75	24. Roue	0.75
25. Roue	0.75	25. Roue	0.75
26. Roue	0.75	26. Roue	0.75
27. Roue	0.75	27. Roue	0.75
28. Roue	0.75	28. Roue	0.75
29. Roue	0.75	29. Roue	0.75
30. Roue	0.75	30. Roue	0.75



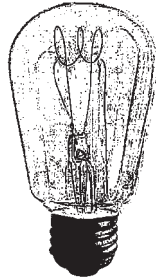
STEAMPUNK CMS107



CMS107  
STEAMPUNK  
Set shown at 50% of Actual Size  
Retail sale price \$21.95



STUDIO 490  
*Wendy Welch*  
STEAMPUNK ART LCS046



the hat makes the man

STEAMPUNK ART



The HEAD is a machine.  
Even though we did not BUILD it,  
we own it and thus have a right to  
TINKER with it. —William James

STUDIO 490  
*Wendy Welch*

LARGE CLING  
MOUNTED  
STAMP SETS

All sets are shown at a reduced size.  
Actual size of sets is 6.5 x 12.5"

STAMPERS ANONYMOUS  
1-800-945-3980 WWW.STAMPERSANONYMOUS.COM

LCS046  
STEAMPUNK ART  
Actual Size 6.5" X 12.5"  
Retail sale price \$24.95



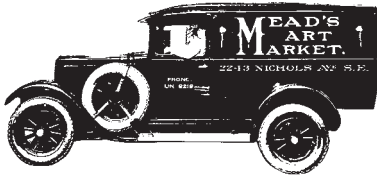
STUDIO 490

*Wendy Leah*

DESTINATION ART LCS047



I hope you realize...  
**this IS art!**



G. W. STIFFLER,



DES MOINES, IOWA,

**i am an artist!**

**oops!**

*THIS WAS CREATED  
ESPECIALLY FOR YOU  
BY ME...*

it started as an art adventure,  
with the destination unknown

LCS047  
DESTINATION ART  
Actual Size 6.5" X 12.5"  
Retail sale price \$24.95

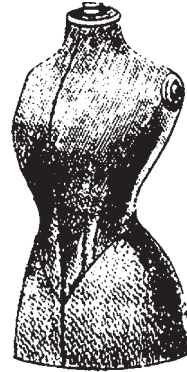
STUDIO 490

*Wendy Leah*

A FORM OF ART LCS048

**Be YOURSELF**

**specimen 2b**



*EVERY ACCOMPLISHMENT  
STARTS WITH THE DECISION TO TRY*

STAMPERS ANONYMOUS  
1-800-945-3980 WWW.STAMPERSANONYMOUS.COM

Out bid for	\$ 14,058.87
Mrs. S. Johnson	✓ 1207.00
a. K. Johnson	✓ 2000.00
a. Jay Ross	✓ 700.00
a. Jay Ross	✓ 250.00
a. My Exchange	✓ 179.20
Bank of Bro.	✓ 1000.00
a. W. H. Huber Bros	✓ 2495.00
a. J. S. Johnson	✓ 102.20
a. S. Huber Bros	✓ 7.87
a. My Exchange	✓ 56.00
a. J. S. Johnson	✓ 1000.00
Upd's Print night	✓ 107.80
a. H. Frankel & Co.	87.00
a. W. G. Johnson	34.00
a. B. Johnson	2000.00
	19716.79

*John & Mrs. Huber*

*HER STYLE WAS SASSY  
WITH JUST A BIT OF ATTITUDE*

LCS048  
A FORM OF ART  
Actual Size 6.5" X 12.5"  
Retail sale price \$24.95

STUDIO 490

*Wendy Leach*

TOOLS FOR ART LCS049

FOR PEN LETTERING  
★ ★ ★ ★ ★ ★ ★ ★  
**ARTIST SET**

NO. 5



NEW 1 OZ. SPEEDBALL  
INDIA BLACK INK

THIS WORLD IS BUT A CANVAS TO OUR  
**IMAGINATION**

THESE ARE A FEW  
OF MY FAVORITE THINGS...



STAMPERS ANONYMOUS  
1-800-945-3980 WWW.STAMPERSANONYMOUS.COM

LCS049  
TOOLS FOR ART  
Actual Size 6.5" X 12.5"  
Retail sale price \$24.95

STUDIO 490

*Wendy Leach*

I AM MY ART LCS050

**ART • ART • ART • ART • ART**



quite simply...  
she LOVED to MAKE ART

NOTHING HAPPENS UNLESS FIRST A DREAM.  
... CARL SANDBURG

**DO NOT DISTURB**  
**THE ARTIST...**

I AM MY ART  
AND MY ART  
IS A REFLECTION  
OF ME...

ART BRINGS TO LIFE  
WHAT THE MIND CAN ONLY  
**IMAGINE**

STAMPERS ANONYMOUS  
1-800-945-3980 WWW.STAMPERSANONYMOUS.COM

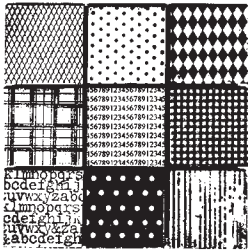
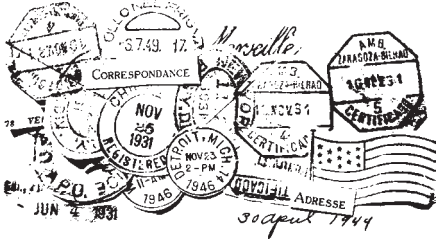
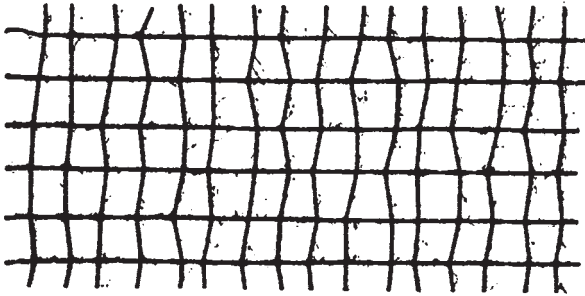
LCS050  
I AM MY ART  
Actual Size 6.5" X 12.5"  
Retail sale price \$24.95

STUDIO 490

*Wendy Leah*

ART GONE POSTAL LCS051

read the fine print



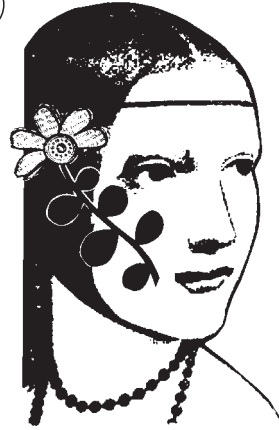
STAMPERS ANONYMOUS  
1-800-945-3980 WWW.STAMPERSANONYMOUS.COM

LCS051  
ART GONE POSTAL  
Actual Size 6.5" X 12.5"  
Retail sale price \$24.95

STUDIO 490

*Wendy Leah*

VISIONS OF ART LCS052



VISION  
is the  
ART  
of seeing what is  
IMVISIBLE  
to others.

she wasn't where she had been...  
she wasn't where she was going...  
but she was certain that she was  
on her way...

IN HER HEART,  
SHE KNEW SHE WAS  
AN ARTIST

STAMPERS ANONYMOUS  
1-800-945-3980 WWW.STAMPERSANONYMOUS.COM

her mind was filled with simple thoughts

LCS052  
VISIONS OF ART  
Actual Size 6.5" X 12.5"  
Retail sale price \$24.95

STUDIO 490

*Wendy Welch*

ART COLORS LIFE LCS053

as the sun colors flowers, so does art color life.  
...john lubbock



*SIMPLIFY*

*Love isn't love  
'til you give it away*

STAMPERS ANONYMOUS  
1-800-945-3980 WWW.STAMPERSANONYMOUS.COM



LCS053  
ART COLORS LIFE  
Actual Size 6.5" X 12.5"  
Retail sale price \$24.95

STUDIO 490

*Wendy Welch*

CELESTIAL ART LCS054

do not look back & wonder  
what if...  
but rather look ahead  
to see...  
what's coming next

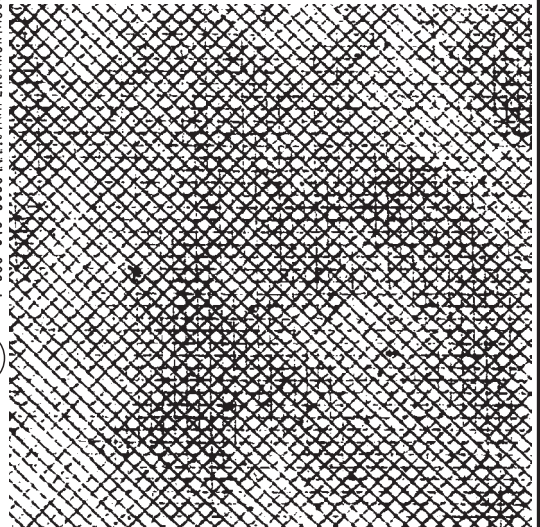


embrace the possibilities

*Become*

who you were meant to be

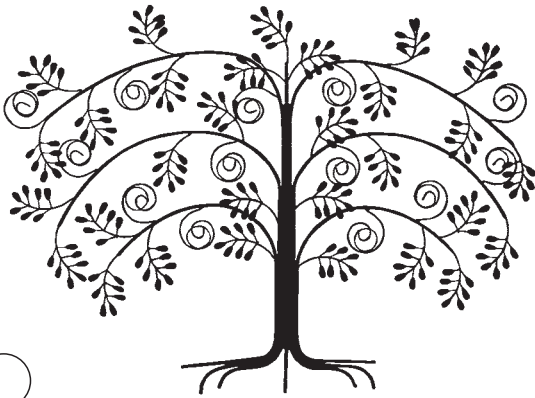
STAMPERS ANONYMOUS  
1-800-945-3980 WWW.STAMPERSANONYMOUS.COM



LCS054  
CELESTIAL ART  
Actual Size 6.5" X 12.5"  
Retail sale price \$24.95

**STUDIO 490**  
*Wendy Leah*  
**EVIDENCE OF ART LCS055**

**EVIDENCE OF ART**



and i say to myself...  
 what a wonderful world

**SPECIMEN B**

THE DARDOSE OF LIFE IS  
 TO BE USEFUL.  
 TO BE RESPONSIBLE.  
 TO BE COMPASSIONATE.  
 IT IS ABOVE ALL TO MATTER,  
 TO COUNT, TO LOVE.  
 TO STAND FOR SOMETHING  
 TO HAVE MADE A DIFFERENCE  
 IN THIS WONDERFUL WORLD.

STAMPERS ANONYMOUS  
 1-800-945-3980 WWW.STAMPERSANONYMOUS.COM

**LCS055**  
**EVIDENCE OF ART**  
 Actual Size 6.5" X 12.5"  
 Retail sale price \$24.95

**STUDIO 490**  
*Wendy Leah*  
**ART IS THERAPEUTIC LCS056**

**AUGUST FLOWER  
 GREEN'S  
 DYSPEPTIC  
 MEDICINE**

CONTAINS 7 1/2% ALCOHOL

Used for Dyspepsia, Sluggish and Torpid Liver, and various forms of Stomach and Bowel Troubles and their effects such as Indigestion, Fermentation, Heartburn, Constipation, Sick Headache, Biliousness, Sour Stomach, Sick Stomach, Palpitation, Colic, and especially useful after Excessive use of Alcoholic Stimulants or Heavy Eating.

GUARANTEED BY  
**G. G. GREEN, INC.,**  
 Sole Manufacturer,  
 WOODBURY, N. J., U. S. A.  
 To be Pure, Wholesome and  
 Free from Adulteration.

PROPRIETOR:  
**L. M. GREEN,**  
 Woodbury, N. J.  
 Registered in U. S. Patent Office.



**yikes!**

the more she shopped  
 the better she felt



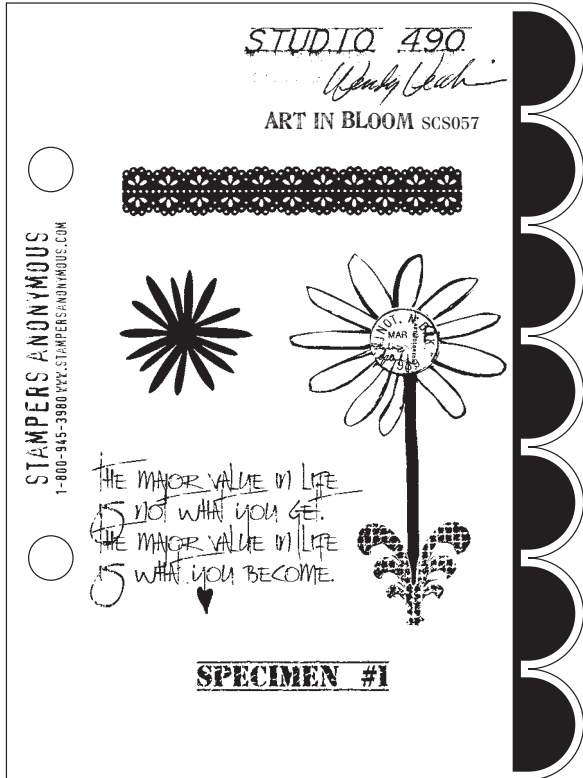
SHE FELT TENSE AND STRESSED...  
 SHE NEEDED RETAIL THERAPY

**LCS056**  
**ART IS THERAPEUTIC**  
 Actual Size 6.5" X 12.5"  
 Retail sale price \$24.95

STAMPERS ANONYMOUS  
 1-800-945-3980 WWW.STAMPERSANONYMOUS.COM



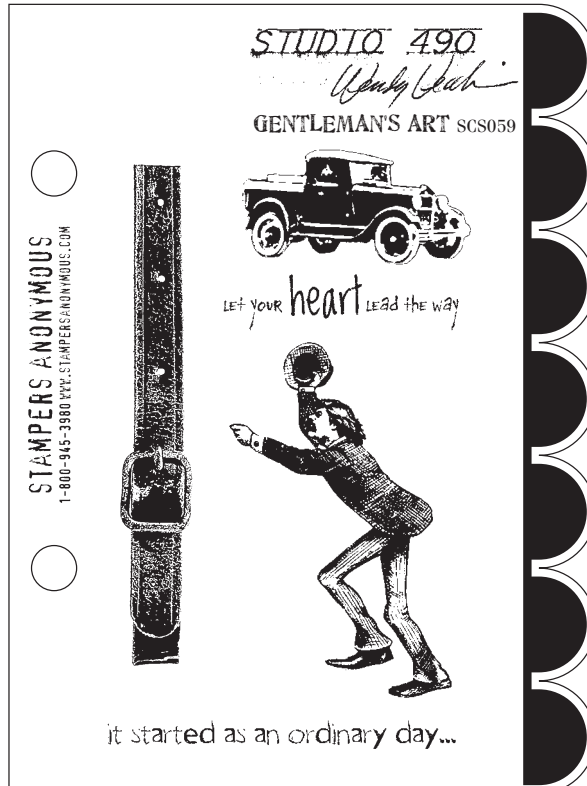
# SMALL CLING MOUNTED STAMP SETS



SCS057  
ART IN BLOOM  
Actual Size 6.5 x 8.75"  
Retail sale price \$17.95



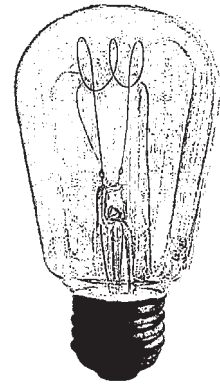
SCS058  
REGAL ART  
Actual Size 6.5 x 8.75"  
Retail sale price \$17.95



SCS059  
GENTLEMAN'S ART  
Actual Size 6.5 x 8.75"  
Retail sale price \$17.95

**BE YOURSELF**

G3-1620  
BE REAL



G2-1619  
ILLUMINATED

**i am an artist!**

G3-1621  
I AM

the more she shopped  
the better she felt

G3-1622  
SHOPPING CURES

**EVIDENCE OF ART**

G4-1623  
EVIDENCE

**DO NOT DISTURB  
The artist...**

J3-1624  
DO NOT DISTURB

THIS WORLD IS BUT A CANVAS TO OUR  
**IMAGINATION**

J3-1625  
IMAGINATION

it was the crown  
that set her apart  
from the others

J3-1626  
THE CROWN

SHE FELT TENSE AND STRESSED...  
SHE NEEDED RETAIL THERAPY

J4-1627  
RETAIL THERAPY

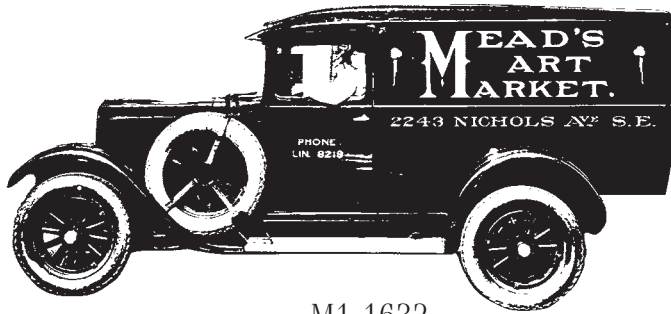
# WARNING!

do not even think of messing with the queen.

J4-1628  
WARNING

I AM MY ART  
AND MY ART  
IS A REFLECTION  
OF ME...

K1-1630  
I AM MY ART



M1-1632  
ART DELIVERY



P2-1634  
TEXTURED LEAVES

I hope you realize...  
**this IS art!**

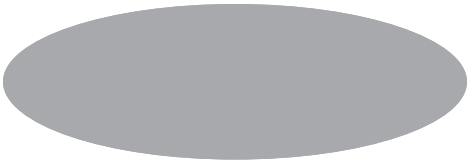
J5-1629  
THIS IS ART

HER STYLE WAS SASSY  
WITH JUST A BIT OF ATTITUDE

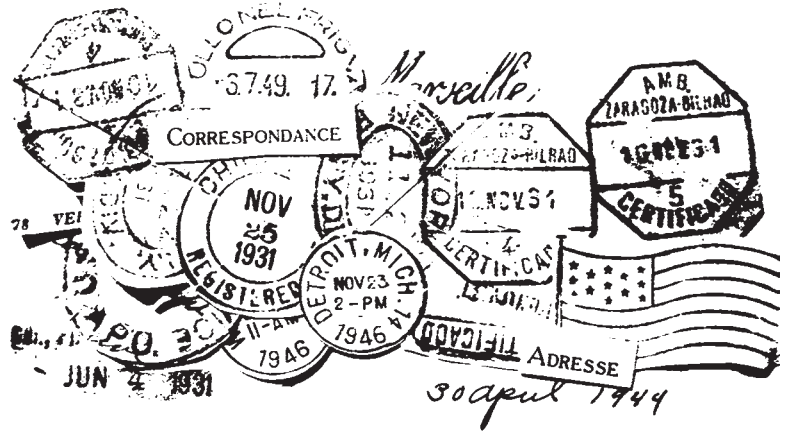
K4-1631  
SO SASSY



M1-1633  
FORM



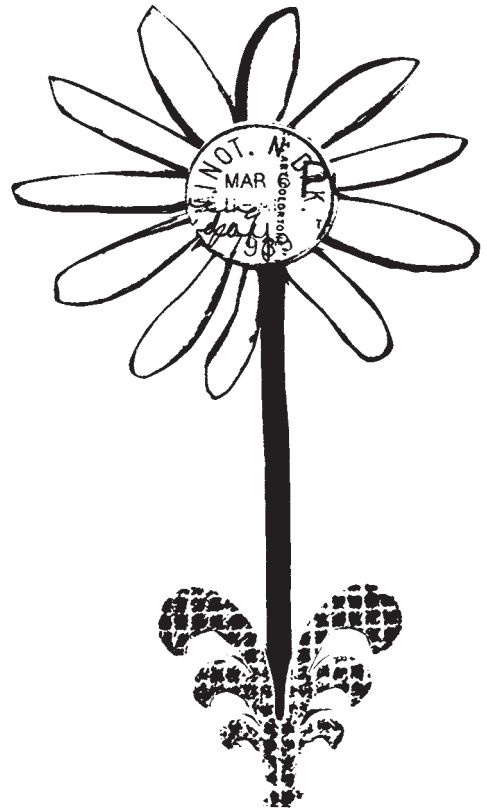
P4-1636  
HEY WAIT



P5-1638  
CANCELLED

IN HER HEART,  
SHE KNEW SHE WAS  
AN ARTIST

P5-1637  
A REAL ARTIST



P4-1635  
BLOSSOM

# Stampers Anonymous

a division of Art Gone Wild and Friends  
3110 Payne Ave. Cleveland OH 44114  
Phone: 800-945-3980 • Fax: 888-401-2979  
www.stampersanonymous.com

## STAMP PRICE LIST

### WOOD MOUNTED STAMPS

<b>C</b> stamp	\$6.00
<b>D</b> stamp	\$7.20
<b>E</b> stamp	\$8.40
<b>G</b> stamp	\$8.70
<b>H</b> stamp	\$9.00
<b>J</b> stamp	\$9.80
<b>K</b> stamp	\$10.20
<b>M</b> stamp	\$11.00
<b>P</b> stamp	\$11.80
<b>U</b> stamp	\$13.00
<b>V</b> stamp	\$14.00
<b>X</b> stamp	\$15.90
<b>LCB</b> cube	\$10.50
<b>CB</b> cube	\$13.70

### SINGLE CLING STAMPS

<b>COM</b>	\$5.95
<b>TC</b>	\$5.95

### CLING STAMP SETS

<b>LCS</b>	\$24.95
<b>SCS</b>	\$17.95

**CMS** All CMS Sets **EXCEPT:**  
CMS 008, 062, 063, 064, 065, 066,  
079, 086, 087, 088, 089, 090, 093, 096, 100,  
101, 104, 108, 110  
**\$21.95**

CMS062, 063, 064, 066, 086, 087,  
088, 089, 090, 093, 096, 100  
101, 104, 108, 110  
**\$29.95**

CMS008  
**\$9.95**

ALL STAMPS ARE SHOWN ACTUAL SIZE.

CATALOG AND CONTENTS COPYRIGHT  
STAMPERS ANONYMOUS

CMS065, 079

**\$34.95**

**ANGEL POLICY:**  
NO MECHANICAL OR ELECTRONIC REPRODUCTION  
HAND STAMP ONLY